

Virtual museum session in the Turku Art Museum

Séance dans un musée virtuel
avec le Musée de Turku

Maarit Mutta, Pauliina Peltonen, Saara Hellström, Anne Keskitalo,
Lailuma Hazrat and Natalia Savchenko

Conférence de clôture du projet LALI
Institut Hongrois de Paris
23.1.2020



TURUN
YLIOPISTO
UNIVERSITY
OF TURKU

Program

10.00-10.15 Warm-up

10.15-11.40 Virtual museum - Myths and stories: Kalevala

- Finnish Art and language
- Suomi – suomen kieli

11.40-12.00 Anne Keskitalo: Developing Multicultural Museum Services & Cultural Pathways Network in City of Tampere

Warm-up (15 minutes)

Hei!

Hi!

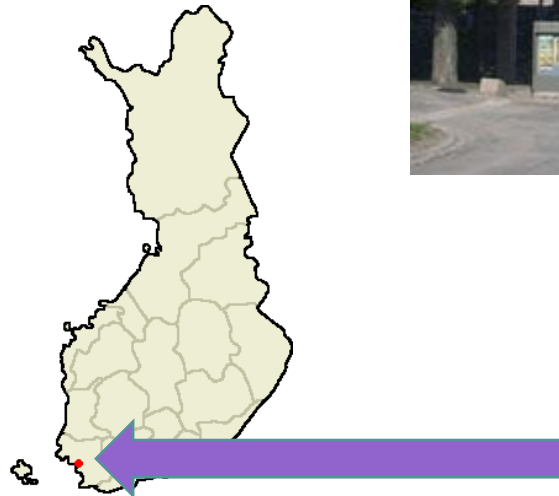
Bonjour !

Hallo!

Turku Art Museum

Myths and stories: Kalevala

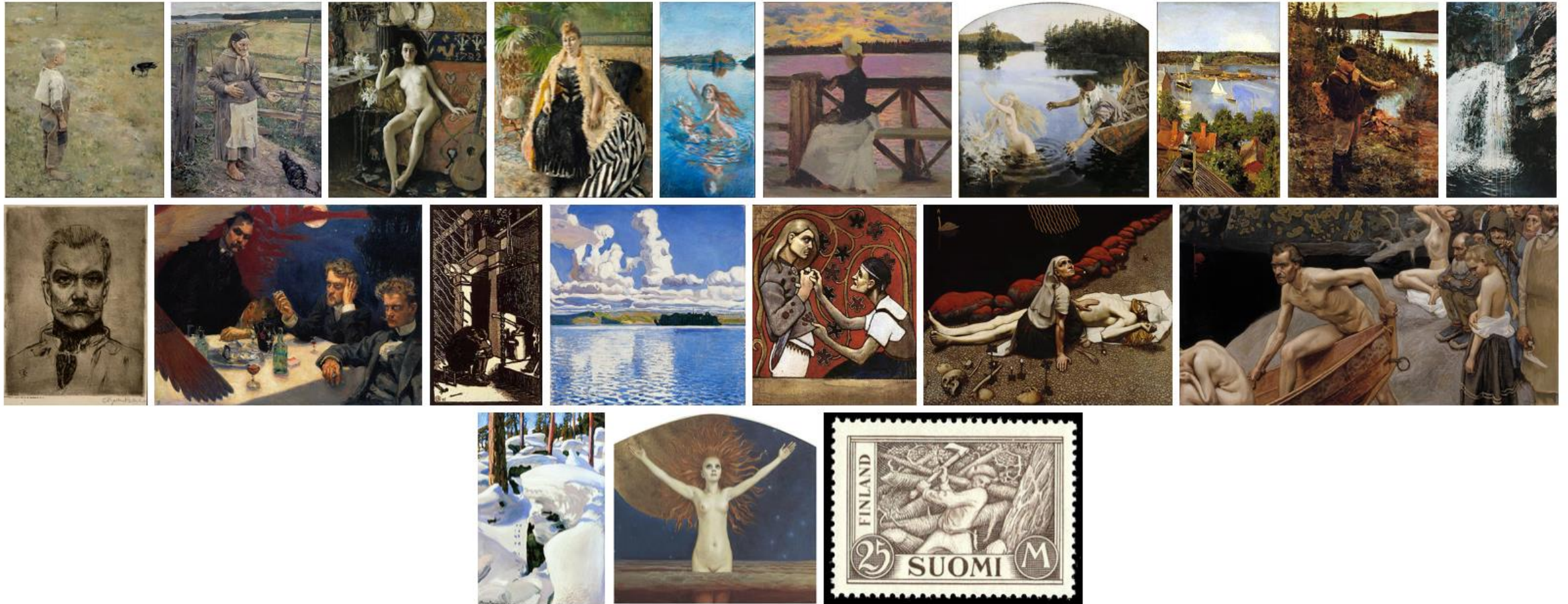
- Finnish Art and language
- Suomi – suomen kieli



Kalevala

-
- A large collection of Kalevala-themed books and covers, including various editions of the Kalevala epic, children's books, and art books, displayed in a collage-like arrangement. The covers feature diverse illustrations, including characters like Väinämöinen, Ilmarinen, and the Sampo, as well as abstract designs and historical figures. The books are in various sizes and colors, creating a vibrant and comprehensive visual representation of the Kalevala's cultural impact.

Kalevala & Akseli Gallen-Kallela



Kalevala & Akseli Gallen-Kallela



Akseli Gallen-Kallela: Sammon puolustus (*The Defense of the Sampo*), 1896



Akseli Gallen-Kallela: Joukahaisen kosto (*Joukahainen's Revenge*), 1897



Akseli Gallen-Kallela:
Sammon puolustus (*The
Defense of the Sampo*),
1896



UNIVERSITY
OF TURKU



Akseli Gallen-Kallela:
Joukahaisen kosto
(*Joukahainen's Revenge*),
1897

Tee oma Sammon ryöstösi



Adaptations of *The Defense of Sampo*



Sources: (middle) Don Rosa 1999. *Sammon salaisuus ja muita Don Rosan parhaita*. Helsinki: Helsinki Media / Sarjakuvat.
(right) Mauri Kunnas 1992. *Koirien Kalevala (The Canine Kalevala)*. Helsinki: Otava.



Kiitos!



maamut@utu.fi

paupelt@utu.fi

sherik@utu.fi



lali-project.eu



UNIVERSITY
OF TURKU

100



**TURUN
YLIOPISTO**
UNIVERSITY
OF TURKU

Partners:



élan interculturel

www.elaninterculturel.com

De l'Art et D'autre

stand129

www.stand129.at



Turun yliopisto
University of Turku

www.utu.fi/en



inf.uni-sopron.hu



Co-funded by the
Erasmus+ Programme
of the European Union

The European Commission support for the production of this publication does not constitute an endorsement of the contents which reflects the views only of the authors, and the Commission cannot be held responsible for any use which may be made of the information contained therein.



**UNIVERSITY
OF TURKU**



Akseli Gallen-Kallela: *The Aino triptych* 1891

https://fi.wikipedia.org/wiki/Aino-taru#/media/File:Gallen_Kallela_The_Aino_Triptych.jpg

AINO & VÄINÄMÖINEN



Akseli Gallen-Kallela: Sketch of the *Aino myth*, second panel of the *Aino triptych* 1891



Canine version of Akseli Gallen-Kallela's *Aino Triptych*

Sources: (left) Turku Art Museum collection
(right) Mauri Kunnas 1992. *Koirien Kalevala (The Canine Kalevala)*. Helsinki: Otava.